



山河幻想

surroundscape

II



tales from bunkui touge



UNAHQ-4002

The Concept of Surround Scape

Surround sound has been widely employed in music productions, particularly for classical music, as well as movies without saying. I have been investigating the possible formulas in which "one plus one makes three or greater", looked into collages of music and other sound components in general, and arrived at a solution with specific impact in music interacting with sound in the nature. The environmental sound and that in the nature are the subject various artists have challenged using stereophonic or dummy-head recordings, but I can sense the infinite power when I capture the dimensional perspective of such sound with surround recording, and above all it sounds absolutely comfortable.

It is genuinely the power of the land and the sky themselves. If this power interacts with music instruments and voices in the domain of surround sound expression, it will create a sphere to appreciate the rhythm from the nature in place of the rhythm of human. And furthermore when the breath of land resonates with ours, one will open up the immense spirit of calmness, waking and love. "Surround Scape" is the new genre that is devised to transmit the above concept, and several concerts have been organized to date at Instituto Italiano di Cultura and other premises. It is now offered to you through Krypton HQMS in 96kHz 24-bit surround format. I hope you enjoy it as a new form of PC-audio entertainment.

December, 2010

Mick Sawaguchi
President
Sawaguchi Ongaku Kobo
UNAMAS-HUG label

山河幻想—tales from bunkui touge

1. BUNKUI-Mountain Rustle (19:00)
2. TOGAKUSHI-Early Bird (19:00)
3. CHO-SHI-Rolling Wave (19:00)

surroundscape



Mick Sawaguchi

Born in 1948 in Beppu city. Audio mixing engineer for dramas in NHK from 1971 through 2005, and contributed in number of productions winning such awards as Grand Prix of Japan Art Festival, Individual Prize of Hoso Bunka Foundation, Galaxy Award of Japan Council for Better Radio and Television, IBC Nombre d'Or, and Premio La Speranza of Vatican. Started developing skills of surround sound designs since 1985 and established Surround Terakoya seminar room to further pursue it along with his own music production Sawaguchi Ongaku Kobo in 2005.

Sound Scape is an artistic repertory that he developed by collecting the nature sound in surround worldwide under specific themes and combined it with music. Past activities include the concert of dance and music "Sokuten Kyoshi" at Instituto Italiano di Cultura, the contemporary music concert "Actual Entity" at Tokyo Opera City, and various stage surround sound designs such as Sound Scape with Shakuhaichi, traditional artists group "Yurabi no Kai" and other stage seminars. Received AES fellowship, IBS Fellow Award, ABU Best Paper, JAS Sound Meister, and AES Japan Award. Invited lectures regarding surround include the workshops in such countries as Korea, China, Singapore and India being regarded as "Surround Shogun" himself in the global audio community. Teaches at Tokyo University of the Arts, Tokyo Technology Communication, and Nagoya University of Arts as temporary instructor.



Shiro Murakami: Apf

Born on March 3, 1989 and grew up in the suburbs of Kawasaki in the nature-rich environment playing with insects. Showed interest in arts and theatrical plays, and started studying music professionally in Tokyo University of the Arts. Keen about the potential of performance premises beyond concert halls and live houses, and the activity expanded widely to the stage directorship and the music workshop planning as well as composition and performance. One of the major goals in his composition is the harmony with the environment of the nature and with the traditional culture.

Recent activities and awards include:
2007-2008: Performance of BGM composition at Marui Yurakucho and Marui Shinjuku

August 2008: Composition for Vermeer Exhibition at Tokyo Metropolitan Museum
March 2009: 4th Sogetsudo Competition Grand Prix "Horror - Avant-Garde Music Tells A Story"

July 2009: Project of music workshop for children "A Composer's Room" at Tokyo University of the Arts

February 2010: MOTUS Award in Contemporary Computer Music Concert

March 2010: Stravinsky's "Soldier's Tale"

May 2010: Composed music for the athletic performance at elementary schools' festival in Yokohama

October 2010: Composed music for Tiger Dance in the Buddhist service of Natsukarisan-Shukoji Temple





Ami Yamazaki: Voice

Voice artist resonating with the sound all over the world. Many collaborations with various musicians, visual image composers, dancers, theatrical plays and others. Also active as movie director, creator of formative arts, and poet.

Recent activities include:

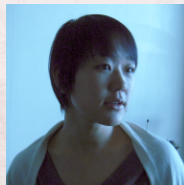
Dedicatory songs to Ise Shrine Surround Scape production with Mick Sawaguchi, the leading surround meister in Japan

Participation in "Stepping Stones", a stage performance by Able Art Japan "Knitting Orchestra", the original music unit

Solo performance "IRIS" utilizing visual images at Gendai Heights

Hosts a program in Community FM broadcast since 2010.

<http://amingerz.exblog.jp/>





Produced by
Sawaguchi Ongaku Kobo Mick Sawaguchi

Produce/Engineer by Mick Sawaguchi SANKEN CUW-180 SONOSAX SX-R4 PYRAMIX 6.1 and Sound Nite
 1-2-13 midori-cho Musashino City, TOKYO JAPAN 180-0012
 TEL : +81 0422-53-8021 UNAMAS : +81 0422 (36) 6252
 e-mail : mick-sawa@u01.gate01.com HP : <http://www.unamas.jp/>
 Photo : Mick Sawaguchi, Design : Katsumi Ohyama Design Office, Illustration : Ami Yamasaki